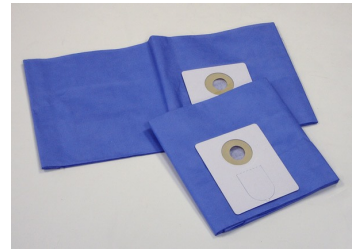


Use only recommended tools & accessories



HEPA Filter - Included



Disposable Filter Bag - Included



Clear Polyliner Recovery Bags - Included



PVC Crushproof Suction Hose Assembly - Included



Tools and Accessories (Toolkit 4B) - Optional

European Headquarters

Tiger-Vac Europa S.R.L.
Via Marie Curie 17
Zona Industriale Ponte Rizzoli
Ozzano Emilia, BO 40064

Tel: ((39) 051 79.53.52)
Fax: ((39) 051 4695077)
Website: <http://www.tiger-vac.eu>
Email: info@tiger-vac.it

International Headquarters

Tiger-Vac International Inc.
2020 Dagenais Blvd. Ouest
Laval, Quebec
Canada H7L 5W2

Tel: (450-625-0099)
Fax: (450-625-3388)
Website: <http://www.tiger-vac.com>
Email: sales@tiger-vac.com



HEPA -
Included



High Efficiency



Wet and Dry
Recovery

Specifications for 2D-15 (TC) RE HEPA

Name	Part Number	Voltage	Hertz	Phase	Wattage	Power	Amperage	Air Flow	Vacuum Pressure	Plug Type	Dry Recovery - Tank	Dry Recovery - Disposable Filter Bag
2D-15 (F) (TC) RE HEPA	110566B	240 V	50 Hz	Single	1050 W	1.1 kW	5 amps.	173 m ³ /h	2110 mm H ₂ O	European	47.3 L	19 L
	Dimensions: H97 cm x W71 cm x L76 cm Weight: 35 kg. Sound Level: 69 dB(A)											
Description: Manufacturer motor performance only on an orifice of Ø2" (Ø50mm). Results may vary.												

2D-15 (F) (TC) RE HEPA	110566C	240 V	50 Hz	Single	1050 W	1.1 kW	5 amps.	173 m ³ /h	2110 mm H ₂ O	UK	47.3 L	19 L
	Dimensions: H97 cm x W71 cm x L76 cm Weight: 35 kg. Sound Level: 69 dB(A)											
Description: Manufacturer motor performance only on an orifice of Ø2" (Ø50mm). Results may vary.												

2D-15 (F) (TC) RE HEPA	110566D	240 V	50 Hz	Single	1050 W	1.1 kW	5 amps.	173 m ³ /h	2110 mm H ₂ O	Swiss	47.3 L	19 L
	Dimensions: H97 cm x W71 cm x L76 cm Weight: 35 kg. Sound Level: 69 dB(A)											
Description: Manufacturer motor performance only on an orifice of Ø2" (Ø50mm). Results may vary.												

2D-15 (F) (TC) RE HEPA	110566E	240 V	50 Hz	Single	1050 W	1.1 kW	5 amps.	173 m ³ /h	2110 mm H ₂ O	Chinese	47.3 L	19 L
	Dimensions: H97 cm x W71 cm x L76 cm Weight: 35 kg. Sound Level: 69 dB(A)											
Description: Manufacturer motor performance only on an orifice of Ø2" (Ø50mm). Results may vary.												

Please note that specifications are subject to change without notice

Technical Sheet for 2D-15 (TC) RE HEPA

HEPA FILTER AND ACCESSORIES - Included	
Part #	Description
211027B	HEPA FILTER 99.995% EFFICIENCY ON 0.3 MICRON (CE VERSION)

FILTERS AND ACCESSORIES - Included	
Part #	Description
211430T	MAIN FILTER ASSEMBLY, PTFE LAMINATED, w/YELLOW GASKET, w/RING #214279 FOR USE WITH POLY TANKS
211394	LIQUID FILTER ASSEMBLY

DISPOSABLE FILTER BAGS - Included

Part #	Description
211063	PAPER FILTER BAGS (PACKAGE OF 5)

POLY LINER RECOVERY BAGS AND ACCESSORIES - Included

Part #	Description
213184M	POLY LINERS "NEST" FOR 12 AND 14 GALLON - NO HOLE (PACKAGE OF 5) INCLUDES TWIST TIES

PVC CRUSHPROOF SUCTION HOSE ASSEMBLY - Included

Part #	Description
381137A	PVC CRUSHPROOF SUCTION HOSE ASSEMBLY, Ø1.5"(38mm)x10'(3m) FOR Ø1.5"(38mm) SCREW TYPE INTAKE

TOOLS AND ACCESSORIES - Optional

Part #	Description
381163	DOUBLE BEND WAND ASSEMBLY (2pc), 1.5" (38mm) x 54" (137cm), CHROME w/ALUMINUM TOOL COUPLING
381171	UNIVERSAL TOOL, INCLUDES RUBBER BLADES & BRUSH STRIPS 18"(45.7cm) -ALUMINUM
381188	CREVICE TOOL SD*, 1.5" (38mm) x 11" (28cm), ALUMINUM
381111B	TOOL KIT# 4B (WITH ALUMINUM CREVICE TOOL)